



# Venice Biennale 2012: Inhabitable Models / Eric Parry Architects, Haworth Tompkins, Lynch Architects

06 SEP 2012

by Nico Saieh

Architecture News Eric Parry Architects Haworth Tompkins Lynch Architects Venice Biennale 2012

4

Like

36

0



© Nico Saieh

Inhabitable Models presents the work of three practices -[Eric Parry Architects](#), [Haworth Tompkins](#), [Lynch Architects](#)- who find their common ground in an engagement with London, as a city of found fragments. Perhaps uniquely among world cities London exists as a series of largely unplanned, independent, layered fragments which nonetheless come together for a host of legal, political, and economic practicalities. In responding to this conception of London, each practice seeks to resist the temptation of "hallmark" architecture in favor of one which is contextually sensitive and rigorously place-specific. Indeed, the practices' appreciation of the fragmentary and unplanned applies both to the London that they find, as well as to the London they leave behind.



© Nico Saieh

### Join Curtin Uni Today

Find Out Why You Should Join Curtin Uni as an Academic. Register Today [www.Curtin.edu.au/Academic50](http://www.Curtin.edu.au/Academic50)

### IT for Architects

Support and Consultancy Architects in Central London [www.lomasdavies.net](http://www.lomasdavies.net)

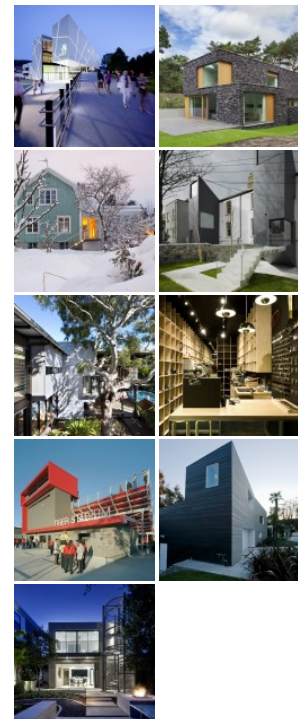
### Architect Quotes?

Alert all London architects here Get up to 5 competing quotes. [Servicestart.com](http://Servicestart.com)

### Open Group Architecture

Complete TOGAF® 9 Starter Pack For MS Visio and Office Users. [www.OrbusSoftware.com/TOGAF@](http://www.OrbusSoftware.com/TOGAF@) AdChoices

## SELECTED BUILDINGS



## MOST VISITED OF THE WEEK

Linked to the trio's shared engagement with London "as found" is their understanding of public space as the common territory between architectural fragments. From playful socializing to political protest, these often unplanned shared territories offer a place for the acts of everyday London life to take place. In a city in which the daily theater of life is played out on urban stages that exist despite the lack of designed public spaces, such shared spaces take on a key importance in London life. This exhibition is an attempt to directly engage visitors with these ideas through spatial representations of the work of each practice. The installation features a series of three large-scale building fragments, which represent the work of Parry at St. James's Gateway in Piccadilly, Lynch's city quarter on Victoria Street in Victoria, and [Haworth Tompkins](#) at the Young Vic in the South Bank. The installation maintains the self-identity of each structural fragment while revealing an additional layer of common ground between the three projects: an attempt to articulate place and decorum through the generous creation of settings for art and public life in the city. Documentary films and a variety of related architectural content accompany the structures to further illustrate the work of the practice and to add a richness to the visitor's understanding of fragmentation, theatricality, and public life in London's shared spaces.



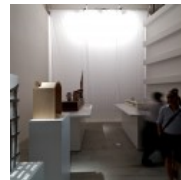
© Nico Saieh



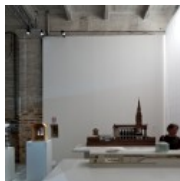
© Nico Saieh



© Nico Saieh



© Nico Saieh



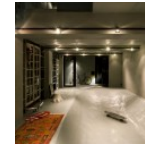
© Nico Saieh



© Nico Saieh



© Nico Saieh



**7 Sep 2012**  
**Skate Park House / LEVEL Architects**



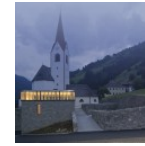
**6 Sep 2012**  
**President of Madrid Puts Foot In Mouth, Offends Architects Everywhere**



**5 Sep 2012**  
**Treehouse Riga / Appleton & Domingos**



**10 Sep 2012**  
**Studio for a Composer / Johnsen Schmalig Architects**



**8 Sep 2012**  
**Cemetery and Wake Room / Schneider & Lengauer**

AdChoices

[Architect Quotes?](#)

Alert all London architects here Get up to 5 competing quotes. [Servicestart.com](#)

[Connect With Architects](#)

Specification Marketing Start Winning Contracts Today [www.riba-insight.com](#)

[Find a Local Architect?](#)

Get contact details for Architects and speak to them directly [www.LocalArchitectsDir...](#)

[ConsultantLine Architects](#)

New Built, Extensions & Conversions Planning and Building Control [www.ConsultantLine.co...](#)

[Building Project?](#)

We Undertake Projects Of Any Size. Come And See Us Today. [remwaydesign.co.uk](#)

**Cite:**

Saieh , Nico . "Venice Biennale 2012: Inhabitable Models / Eric Parry Architects, Haworth Tompkins, Lynch Architects" 06 Sep 2012. [ArchDaily](#). Accessed 12 Sep 2012. <<http://www.archdaily.com/269727>>

**Recommended:**